

WELCOME TO PALACE PLACE
1 PALACE PIER COURT
 SUITE # 3002



Palace Place features a modern mix of Oriental and Louis XV inspired furnishings and accessories.



Taking as its inspiration the legendary waterfront estates of the Gatsby era, Palace Place represents a chic and sophisticated view of condominium living, one without precedent in Toronto.

PALACE PLACE features every conceivable amenity, including valet parking, a security system, with a 24-hour concierge, guards, and video surveillance, signature services, guest suites, shuttle bus service, and a world-class health club, with a squash court, a racquetball court, a sauna room, an indoor pool, a recreation room, and a rooftop lounge. It is conveniently located, with easy access to major arteries, particularly Lakeshore Boulevard, the Gardiner Expressway, and the Queen Elizabeth Way. It is approximately a 5-minute drive to downtown Toronto and 15-minutes to the airport.



FOR SALE AT: \$607,000

MAINTENANCE: \$934.13

SPECIAL FEATURES

- Suite 3002 features an extended marble entrance and brand new wood flooring.
- Appliances include fridge, stove, microwave, dishwasher, and washer and dryer.
- One parking spot is included.



EXCEEDING EXPECTATIONS

DAIVA DALINDA
Broker

Royal LePage Real Estate Services Limited, Brokerage

LUKE DALINDA
Sales Representative

Royal LePage Real Estate Services Ltd., Brokerage Tel. (416) 236-1871 Email: ldalinda@dalinda.net

The information that has been written herein has been obtained from sources that have been deemed reliable. There has been no reason to doubt its accuracy, but, regretfully, it cannot be guaranteed. Royal LePage Real Estate Services Ltd., Brokerage. © DalindaTeam.com.

WELCOME TO PALACE PLACE
1 PALACE PIER COURT
 SUITE # 3002



ON A CLEAR DAY, YOU CAN SEE FOREVER!

Breathtaking is the word that best describes Palace Place, which is the most prestigious, luxurious, and best managed waterfront condominium residence in Canada. Suite 3002 is a stunning condominium residence, with approximately 1,186 square feet of living space and an unobstructed view of the city and Lake Ontario.

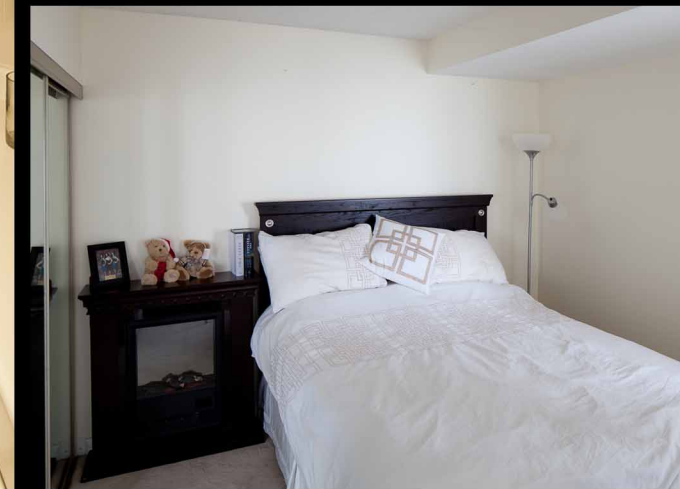
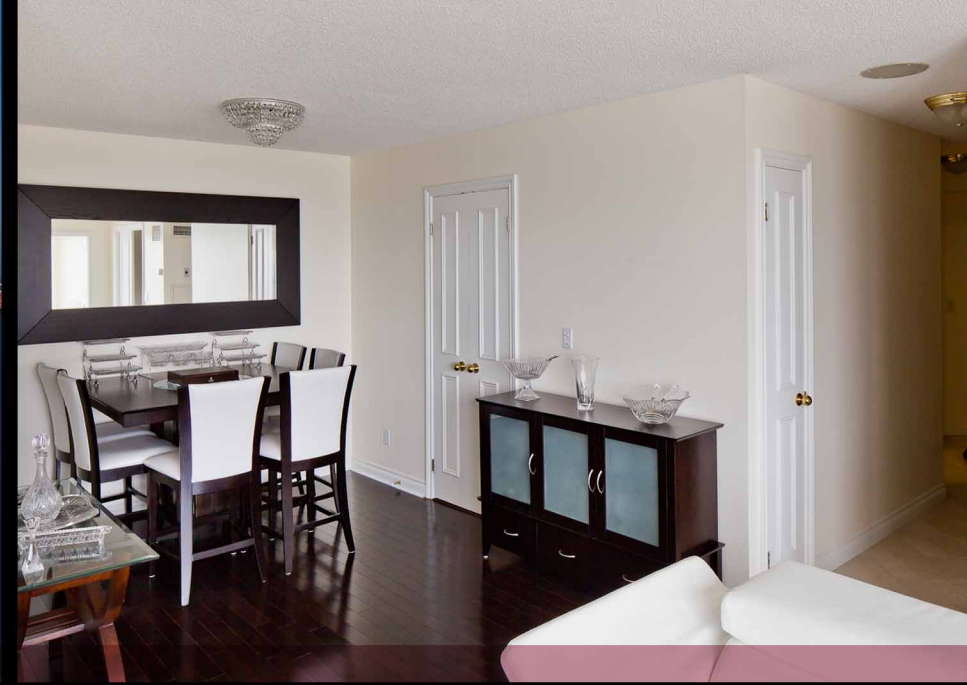
EXCEEDING EXPECTATIONS

DAIVA DALINDA
Broker

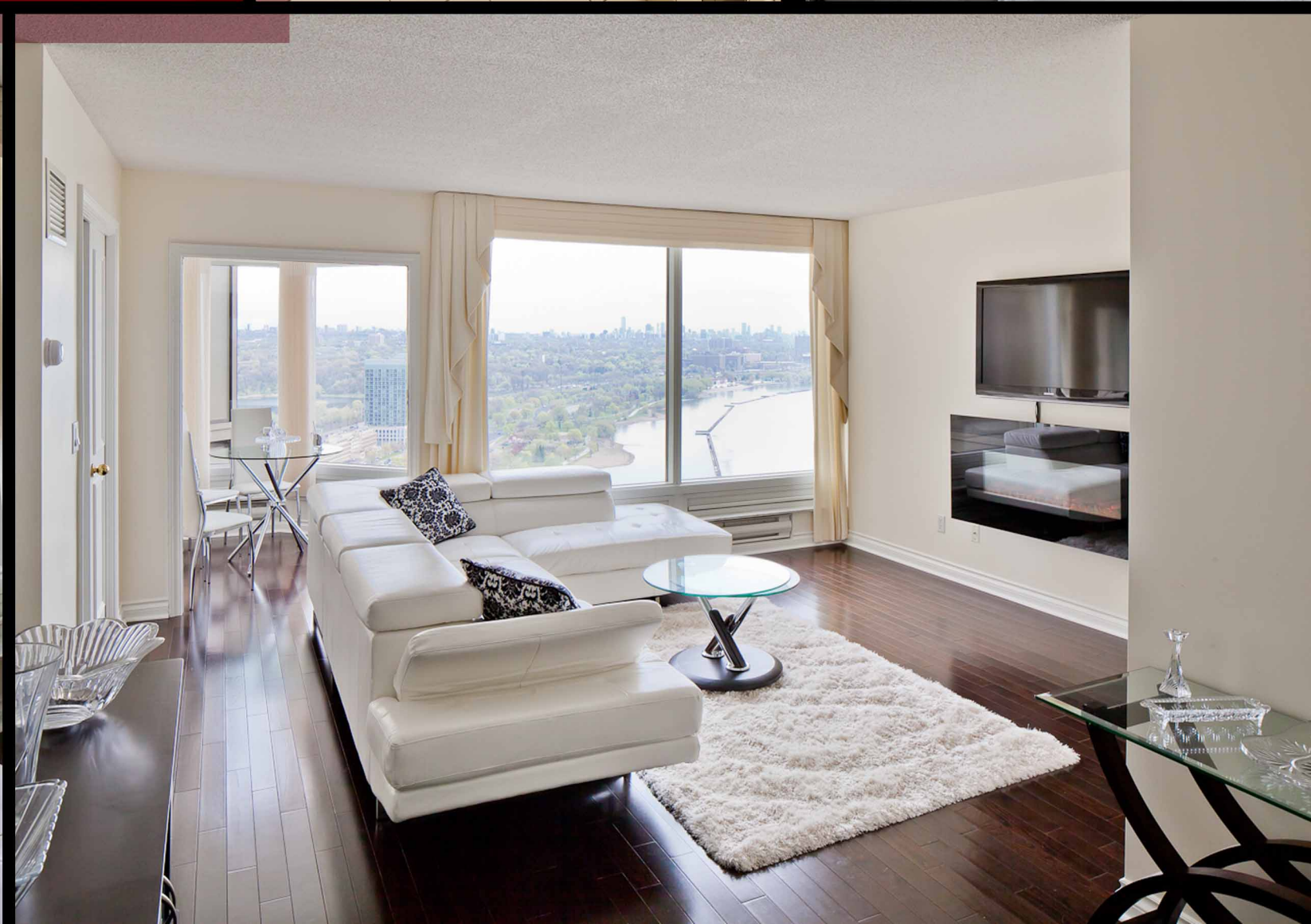
Royal LePage Real Estate Services Limited, Brokerage

LUKE DALINDA
Sales Representative

Royal LePage Real Estate Services Ltd., Brokerage Tel. (416) 236-1871 Email: ldalinda@dalinda.net



From the moment you step in, you will appreciate the uncompromising attention to detail in every room. Natural light floods the whole unit, which has floor to ceiling windows throughout. This is an ideal home for professional couples, who want the convenient and carefree lifestyle that a luxury condominium offers.



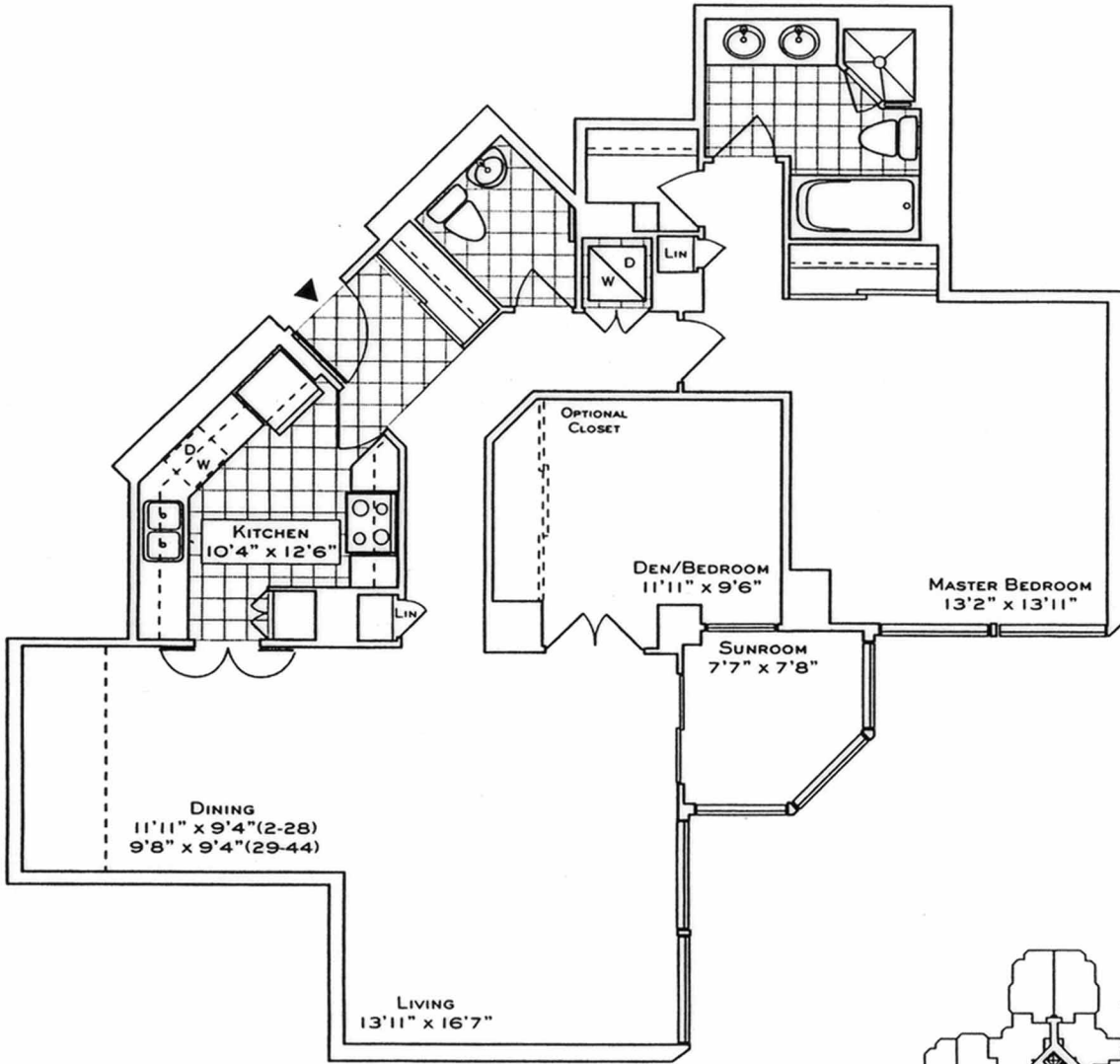
FLOOR PLAN

1 PALACE PIER COURT

SUITE 3002

The Bridge Point

SUITE 02
1204 SQ. FT.
(FLOORS 2 THRU 28)
1186 SQ. FT.
(FLOORS 29 THRU 44)

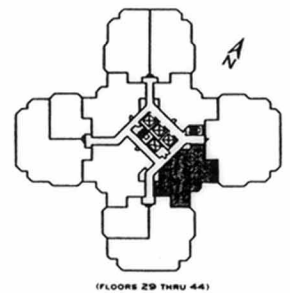
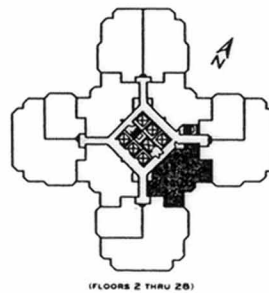


Your new home at Palace Place is about a million miles from the ordinary, offering a sybaritic lifestyle in a landmark building. From valet parking to the unsurpassed service of the concierge who, like the manager of a 5-star hotel, will cater to your every whim.

Play squash, swim, work-out or relax in a soothing whirlpool. The rooftop "Lakeshore Club" offers an exclusive dining room, video theatre, and party facilities with 360° views of the city and lake that are truly breathtaking.

Additionally, there is a private shuttle service to and from downtown, a fully equipped business centre, tuck shop off the lobby and, for overnight visitors, guest suites.

Living at Palace Place, on your private peninsula overlooking Lake Ontario, is an experience that can never, will never, be duplicated. Enjoy.



Plan, specifications and dimensions shown are approximations and are for illustrative purposes only and may not coincide with the existing site, as constructed. Suite area may be verified by measuring the suite as well as the condominium plan registered as 451. Actual usable floor space may vary from the stated floor area in accordance with ONWSP guidelines. These drawings are not to scale.



Daiva Dalinda, Broker, and Luke Dalinda, Sales Representative
Royal LePage Real Estate Services Ltd., Brokerage
416 236 1871 | ldalinda@Dalinda.net

