

# FLOOR PLAN

# 1 PALACE PIER COURT

## SUITE 1503

The  
Lake  
Point

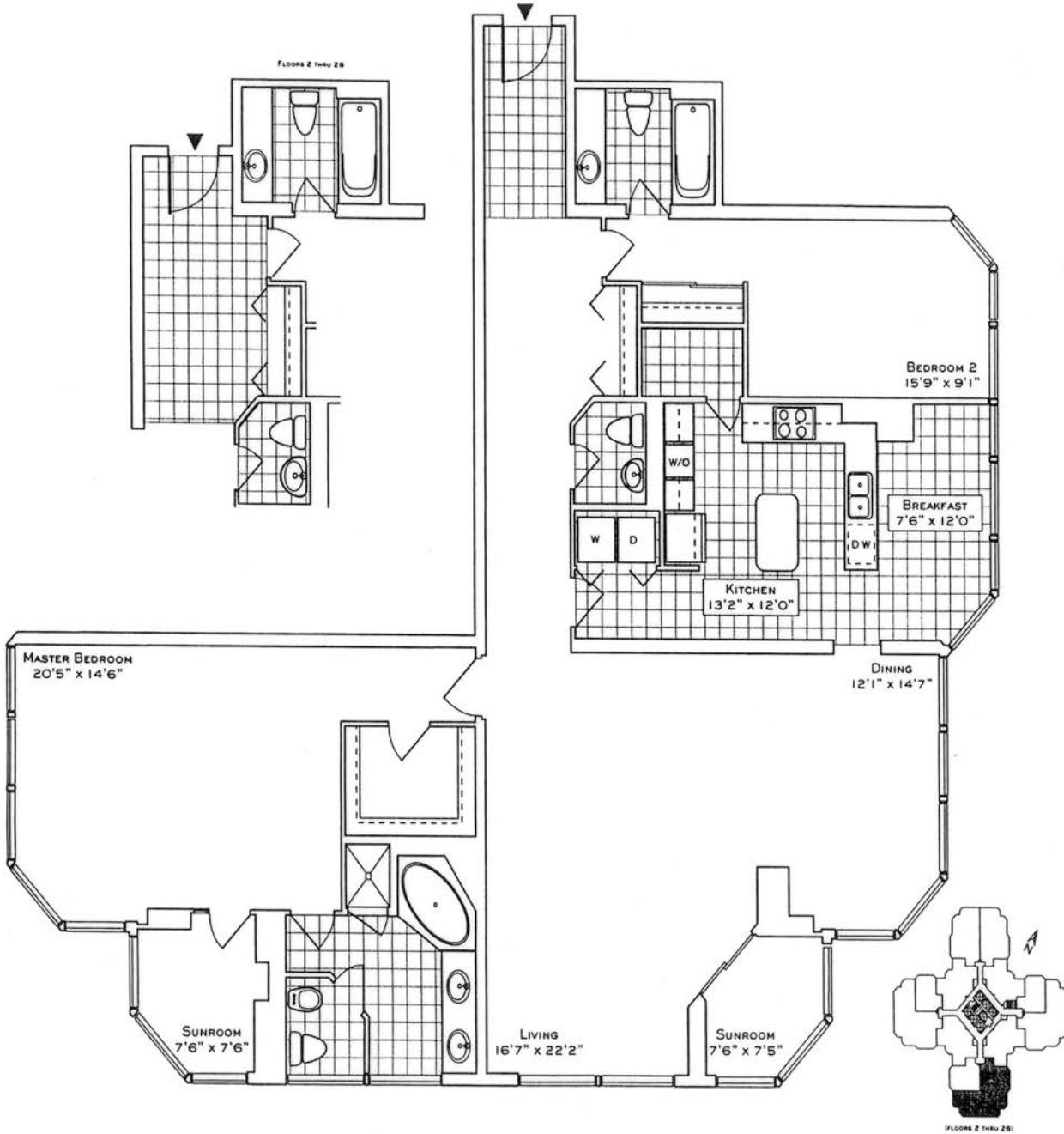
SUITE 03  
1985 SQ. FT.  
(FLOORS 2 THRU 28)  
2028 SQ. FT.  
(FLOORS 29 THRU 44)

Your new home at Palace Place is about a million miles from the ordinary, offering a sybaritic lifestyle in a landmark building. From valet parking to the unsurpassed service of the concierge who like the manager of a 5-star hotel, will cater to your every whim.

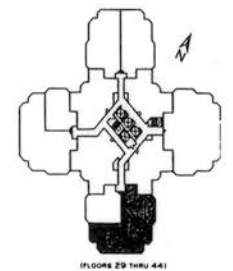
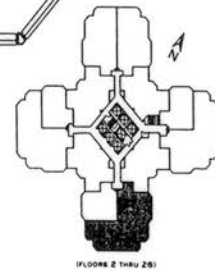
Play squash, swim, work out or relax in a soothing whirlpool. The rooftop "Lakehouse Club" offers an exclusive dining room, video theatre, and party facilities with 360° views of the city and lake that are truly breathtaking.

Additionally, there is a private shuttle service to and from downtown, a fully equipped business centre, tack shop off the lobby and, for overnight visitors, guest suites.

Living at Palace Place, on your private peninsula overlooking Lake Ontario, is an experience that can never will never be duplicated. Enjoy.



 PALACE PLACE



These specifications and dimensions shown are approximate and not for contract purposes only and may not comply with the zoning code or standards. Their use may be limited by requiring the sale or will be the responsibility of the buyer. Actual results may vary. See the actual floor plan in accordance with ONTARIO Building Code Act for details.



Luke Dalinda, Sales Representative  
Royal LePage Real Estate Services Ltd., Brokerage  
416 236 1871 [ldalinda@Dalinda.net](mailto:ldalinda@Dalinda.net)

